

Technical Data Sheet



Catalog No. K2XGF24-0.5

Characteristics	
Phase	1
KVA	0.5
Primary	240X480V
Secondary	24/48V
Conductor	Copper
Temp. Rise	115° C
Frequency	60 HZ
Taps	None
ESS	No
Insulation	180° C
Weathershield	N/A
Wall Bracket	Built-In
Weight(lbs)	21
Sound(dB)	40

Notes

All units are UL listed and are designed in accordance with applicable NEMA, ANSI and IEEE standards.

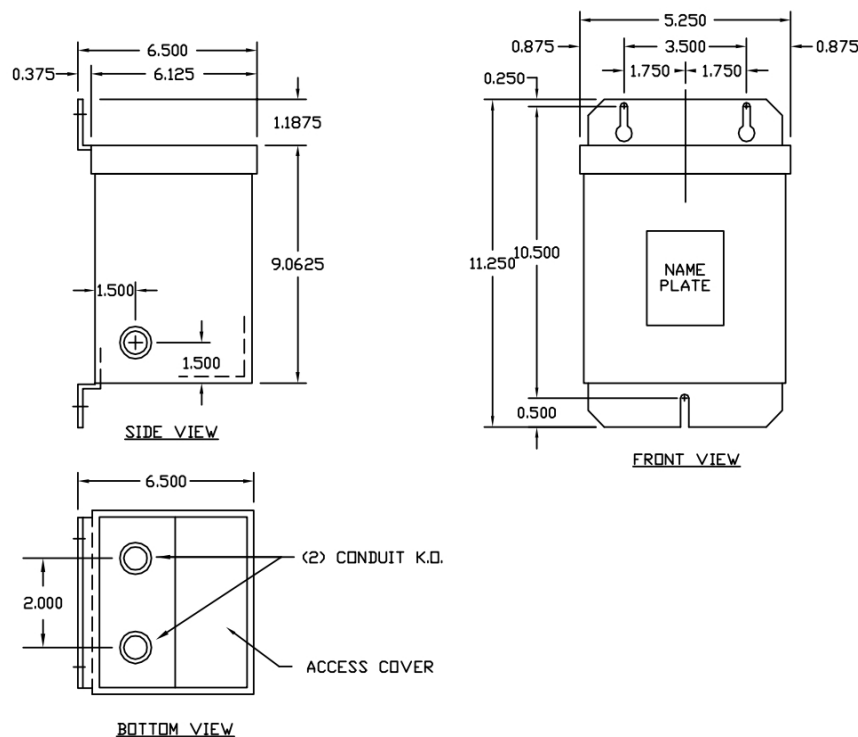
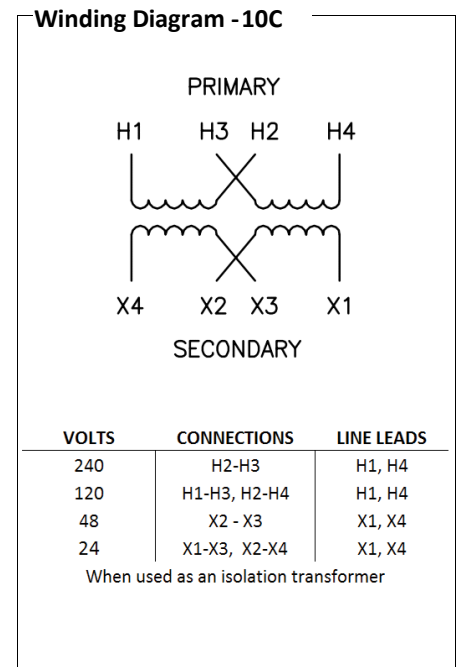
Transformers are dry-type AA, non-ventilated NEMA 3R enclosure.

Transformers are wall mounted. Wall mounting bracket is built into the enclosure.

Paint color is ANSI 61.

AMP Ratings

Line In (Load) @ 240V	2.1A
Line In (Load) @ 480V	1.0A
Load (Secondary) @ 24V	20.8A
Load (Secondary) @ 48V	10.4A



Outline No: 05A1463