

Technical Data Sheet



Catalog No. K2XGF24-1.5

Characteristics

| | |
|---------------|----------|
| Phase | 1 |
| KVA | 1.5 |
| Primary | 240X480V |
| Secondary | 24/48V |
| Conductor | Copper |
| Temp. Rise | 115° C |
| Frequency | 60 HZ |
| Taps | None |
| ESS | No |
| Insulation | 180° C |
| Weathershield | N/A |
| Wall Bracket | Built-In |
| Weight(lbs) | 45 |
| Sound(dB) | 40 |

Notes

All units are UL listed and are designed in accordance with applicable NEMA, ANSI and IEEE standards.

Transformers are dry-type AA, non-ventilated NEMA 3R enclosure.

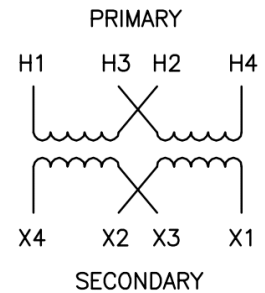
Transformers are wall mounted. Wall mounting bracket is built into the enclosure.

Paint color is ANSI 61.

AMP Ratings

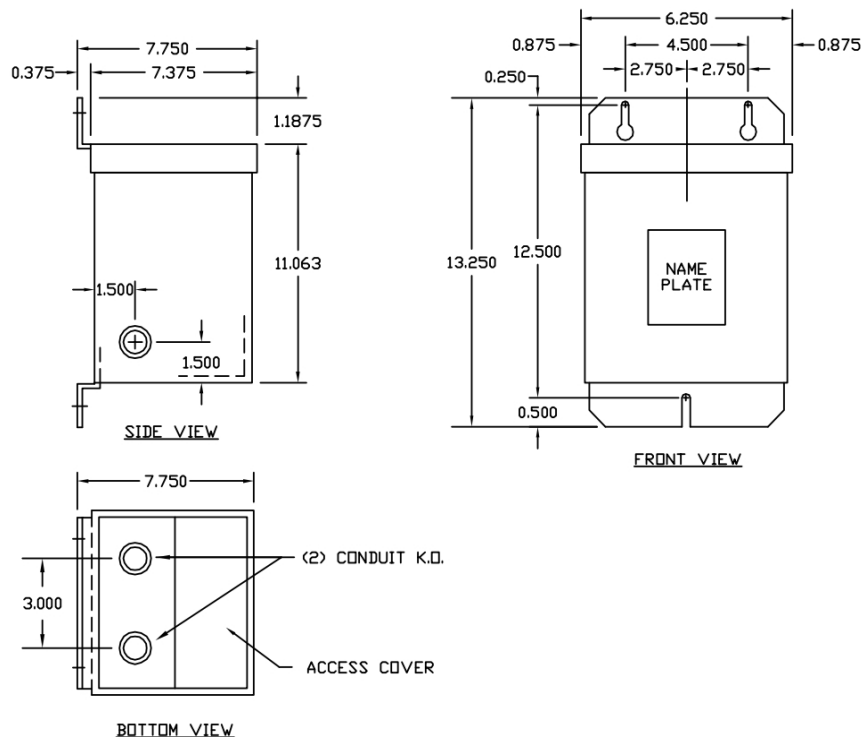
| | |
|------------------------|-------|
| Line In (Load) @ 240V | 6.3A |
| Line In (Load) @ 480V | 3.1A |
| Load (Secondary) @ 24V | 62.5A |
| Load (Secondary) @ 48V | 31.3A |

Winding Diagram - 10C



| VOLTS | CONNECTIONS | LINE LEADS |
|-------|--------------|------------|
| 240 | H2-H3 | H1, H4 |
| 120 | H1-H3, H2-H4 | H1, H4 |
| 48 | X2 - X3 | X1, X4 |
| 24 | X1-X3, X2-X4 | X1, X4 |

When used as an isolation transformer



Outline No: 05A1464