

# Technical Data Sheet



## Catalog No. K2XGF24-1

Characteristics	
Phase	1
KVA	1
Primary	240X480V
Secondary	24/48V
Conductor	Copper
Temp. Rise	115° C
Frequency	60 HZ
Taps	None
ESS	No
Insulation	180° C
Weathershield	N/A
Wall Bracket	Built-In
Weight(lbs)	28
Sound(dB)	40

### Notes

All units are UL listed and are designed in accordance with applicable NEMA, ANSI and IEEE standards.

Transformers are dry-type AA, non-ventilated NEMA 3R enclosure.

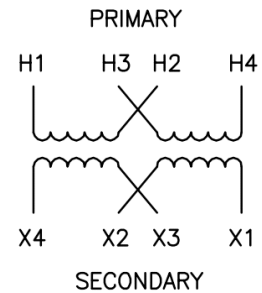
Transformers are wall mounted. Wall mounting bracket is built into the enclosure.

Paint color is ANSI 61.

### AMP Ratings

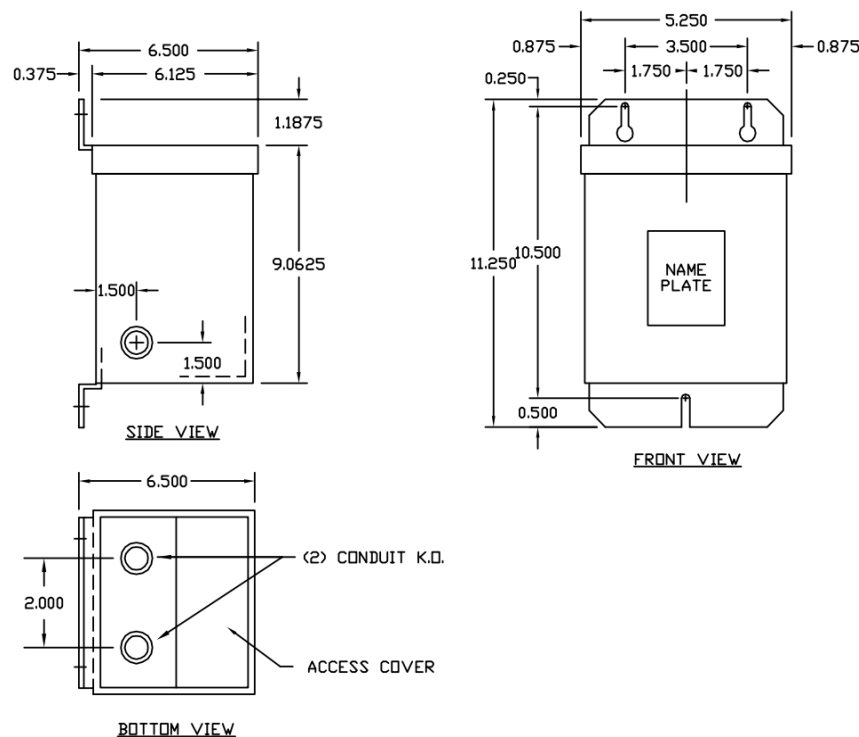
<b>Line In (Load) @ 240V</b>	4.2A
<b>Line In (Load) @ 480V</b>	2.1A
<b>Load (Secondary) @ 24V</b>	41.7A
<b>Load (Secondary) @ 48V</b>	20.8A

### Winding Diagram - 10C



VOLTS	CONNECTIONS	LINE LEADS
240	H2-H3	H1, H4
120	H1-H3, H2-H4	H1, H4
48	X2 - X3	X1, X4
24	X1-X3, X2-X4	X1, X4

When used as an isolation transformer



Outline No: 05A1463