

# Technical Data Sheet



## Catalog No. N48SF2Y-9

Characteristics	
Phase	3
KVA	9
Primary	480Δ
Secondary	208Y/120
Conductor	Aluminum
Temp. Rise	115° C
Frequency	60 HZ
Taps	-2@5%
ESS	Yes
Insulation	180° C
Weathershield	N/A
Wall Bracket	Built-In
Weight (lbs)	270
Sound(dB)	40

### Notes

All units are UL listed and are designed in accordance with applicable NEMA, ANSI and IEEE standards.

Transformers are dry-type AA, non-ventilated NEMA 3R enclosure

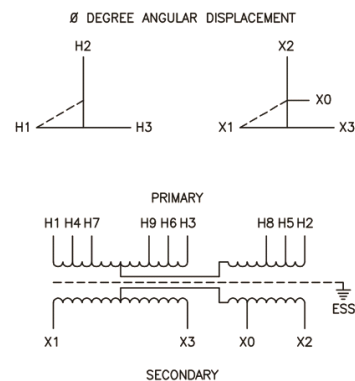
Transformers are wall mounted. Wall mounting bracket is built into the enclosure.

Paint color is ANSI 61.

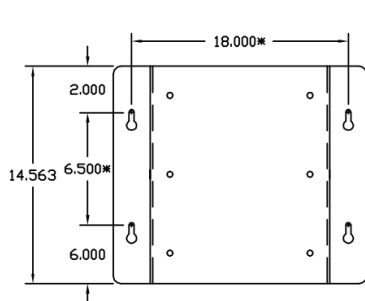
### AMP Ratings

<b>Line In (Primary) @ 480V</b>	<b>10.8A</b>
<b>Load (Secondary) @ 208V</b>	<b>25.0 A</b>

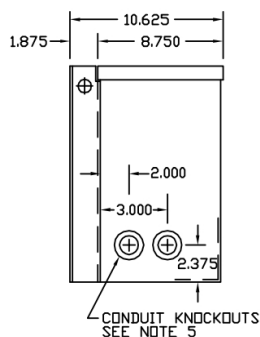
### Winding Diagram - 15



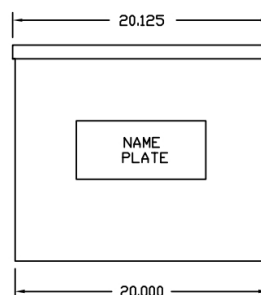
VOLTS	CONNECTIONS	LINE LEADS
480		H1, H2, H3
456		H4, H5, H6
432		H7, H8, H9
208Y/120		X0, X1, X2, X3



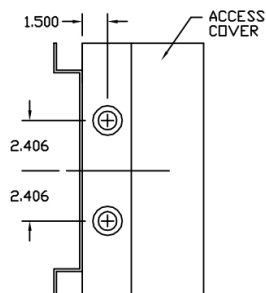
BACK VIEW



SIDE VIEW



FRONT VIEW



Outline No: 08A7634