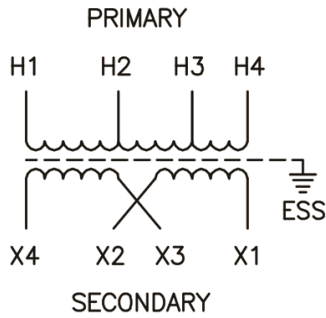


Technical Data Sheet



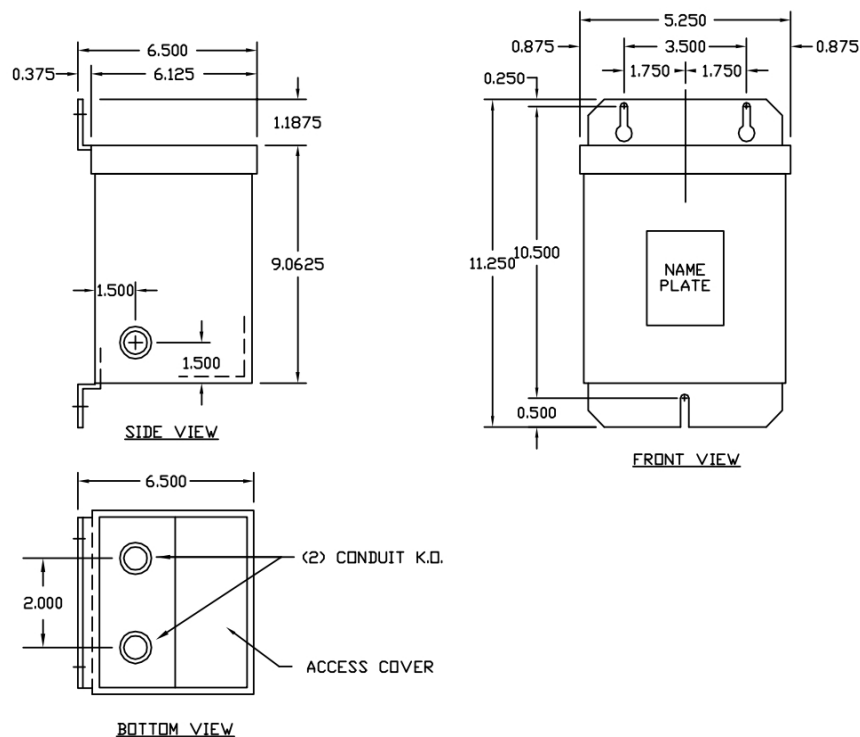
Catalog No. P60CF21-1

Characteristics		Notes		Wiring Diagram - 3																						
Phase	1	<p>All units are UL listed and are designed in accordance with applicable NEMA, ANSI and IEEE standards.</p> <p>Transformers are dry-type AA, non-ventilated NEMA 3R enclosure.</p> <p>Transformers are wall mounted. Wall mounting bracket is built into the enclosure.</p> <p>Paint color is ANSI 61.</p>		<table><tr><th>VOLTS</th><th>CONNECTIONS</th><th>LINE LEADS</th></tr><tr><td>600</td><td></td><td>H1,H4</td></tr><tr><td>570</td><td></td><td>H1,H3</td></tr><tr><td>540</td><td></td><td>H1,H2</td></tr><tr><td>240</td><td>X2-X3</td><td>X1, X4</td></tr><tr><td>240/120</td><td>X2-X3</td><td>X1, X2, X4</td></tr><tr><td>120</td><td>X1-X3, X2-X4</td><td>X1, X4</td></tr></table>		VOLTS	CONNECTIONS	LINE LEADS	600		H1,H4	570		H1,H3	540		H1,H2	240	X2-X3	X1, X4	240/120	X2-X3	X1, X2, X4	120	X1-X3, X2-X4	X1, X4
VOLTS	CONNECTIONS					LINE LEADS																				
600						H1,H4																				
570						H1,H3																				
540						H1,H2																				
240	X2-X3	X1, X4																								
240/120	X2-X3	X1, X2, X4																								
120	X1-X3, X2-X4	X1, X4																								
KVA	1																									
Primary	600V																									
Secondary	120/240v																									
Conductor	Copper																									
Temp. Rise	115° C																									
Frequency	60 HZ																									
Taps	-2@5%																									
ESS	Yes																									
Insulation	180° C																									
Weathershield	N/A																									
Wall Bracket	Built-In																									
Weight(lbs)	28																									
Sound(dB)	40																									

AMP Ratings	
Line In (Primary) @ 600V	1.7A
Load (Secondary) @ 120V	8.3A
Load (Secondary) @ 240v	4.2A

AMP Ratings

Line In (Primary) @ 600V	1.7A
Load (Secondary) @ 120V	8.3A
Load (Secondary) @ 240v	4.2A



Outline No: 05A1463