

Typical Performance Technical Data Sheet



Catalog No. T20LB42-300

Characteristics

Phase	3
KVA	300
Primary	208Δ
Secondary	480Y/277
Conductor	Aluminum
Temp. Rise	80° C
Frequency	60 HZ
Taps	+1, -1 x 5%
ESS	No
Insulation	220° C
Weathershield	WS-16
Wall Bracket	NONE
Weight (lbs)	3340
Sound (dB)	55

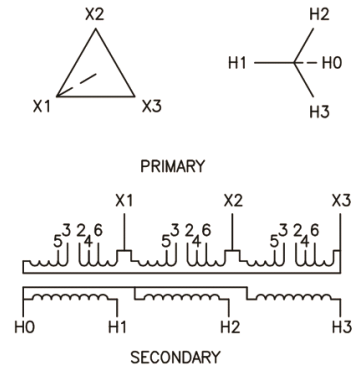
Typical Performance @ 100° C

Regulation @ 100% PF	0.7%
Regulation @ 80% PF	2.3%
Impedance	3.0%
No Load Losses (W)	711
Full Load Losses (W)	2,314

AMP Ratings

Line In (Primary) @ 208V	833 A
Load (Secondary) @ 480V	361 A

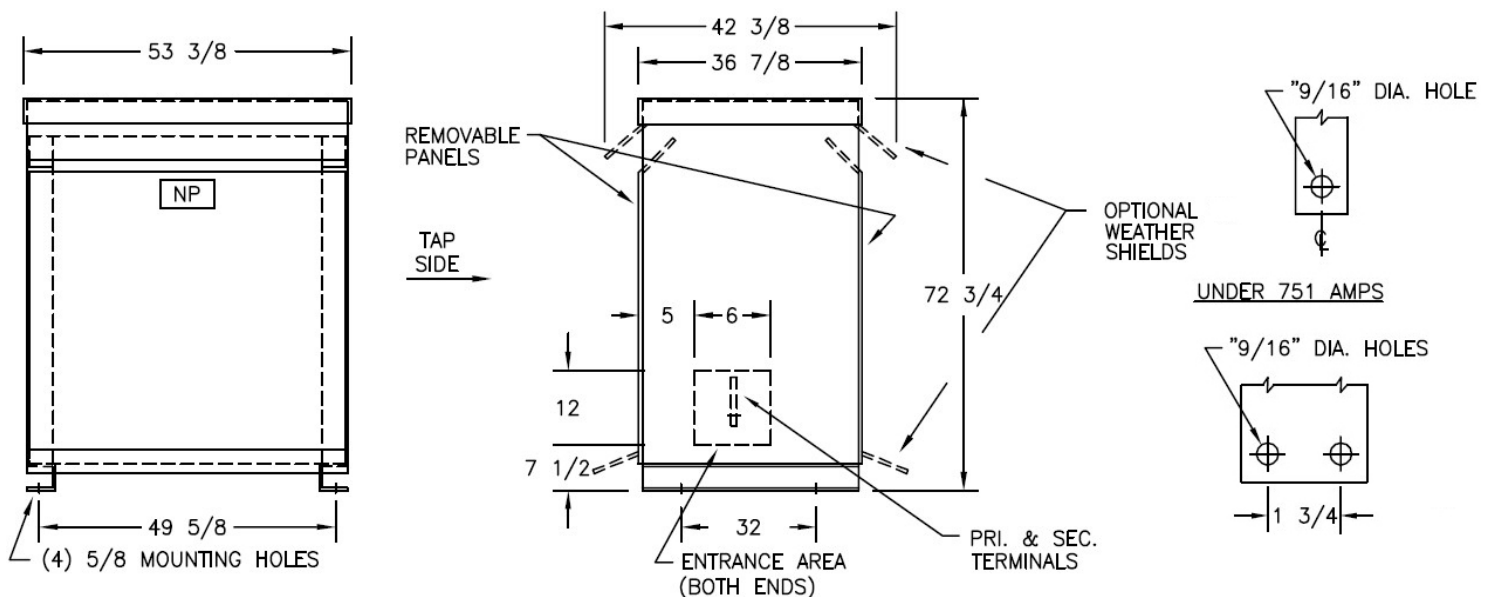
Wiring Diagram -23E



VOLTS	CONNECTIONS	LINE LEADS
216	2 TO 3	X1, X2, X3
208	3 TO 4	X1, X2, X3
200	4 TO 5	X1, X2, X3
480Y/277		H0, H1, H2, H3

Notes

All units are UL listed and are designed in accordance with applicable NEMA, ANSI and IEEE standards.
Transformers are dry-type AA, ventilated NEMA 2 enclosure.
If a weathershield is indicated above this transformer can be converted to a NEMA 3R enclosure.
Transformers are floor mounted. Wall mounting bracket kit if shown above is optional and is supplied as a separate accessory.
Paint color is ANSI 61.



Outline No: 08A3309

Meets 10 CFR 431(DOE 2016) Efficiency
Dry Type Transformer General Purpose

© 2017 Electro-Mechanical Corporation

For reference only
Subject to change without notice