

Typical Performance Technical Data Sheet



Catalog No. T20LH42-15

Characteristics

Phase	3
KVA	15
Primary	208Δ
Secondary	480Y/277
Conductor	Aluminum
Temp. Rise	150° C
Frequency	60 HZ
Taps	+2, -2 x 2.5%
ESS	No
Insulation	220° C
Weathershield	WS-2
Wall Bracket	WMB-3
Weight (lbs)	245
Sound (dB)	45

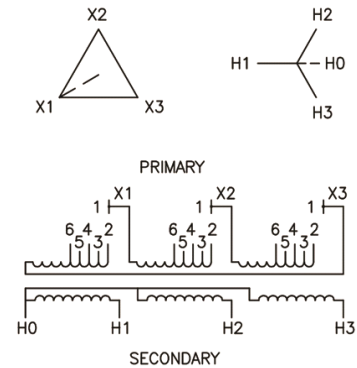
Typical Performance @ 170° C

Regulation @ 100% PF	3.9%
Regulation @ 80% PF	4.2%
Impedance	4.3%
No Load Losses (W)	49
Full Load Losses (W)	578

AMP Ratings

Line In (Primary) @ 208V	42 A
Load (Secondary) @ 480V	18 A

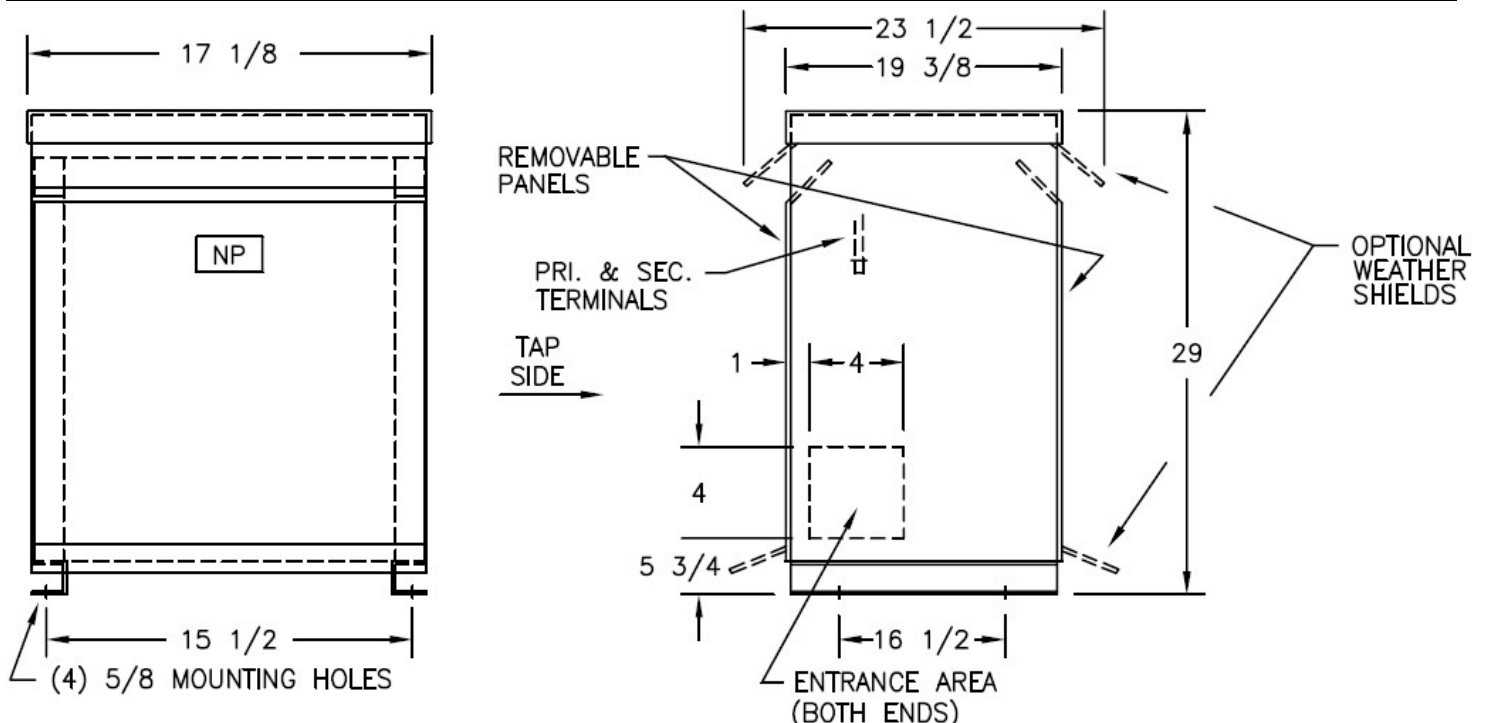
Wiring Diagram -23



VOLTS	CONNECTIONS	LINE LEADS
218	1 TO 2	X1, X2, X3
213	1 TO 3	X1, X2, X3
208	1 TO 4	X1, X2, X3
203	1 TO 5	X1, X2, X3
198	1 TO 6	X1, X2, X3
480Y/277		H0, H1, H2, H3

Notes

All units are UL listed and are designed in accordance with applicable NEMA, ANSI and IEEE standards.
Transformers are dry-type AA, ventilated NEMA 2 enclosure.
If a weathershield is indicated above this transformer can be converted to a NEMA 3R enclosure.
Transformers are floor mounted. Wall mounting bracket kit if shown above is optional and is supplied as a separate accessory.
Paint color is ANSI 61.



Outline No: 08A3302