

Typical Performance Technical Data Sheet



Catalog No. T20SB2Y-75

Characteristics

Phase	3
KVA	75
Primary	208Δ
Secondary	208Y/120
Conductor	Aluminum
Temp. Rise	80° C
Frequency	60 HZ
Taps	+2, -2 x 2.5%
ESS	Yes
Insulation	220° C
Weathershield	WS-10B
Wall Bracket	NONE
Weight (lbs)	1045
Sound (dB)	50

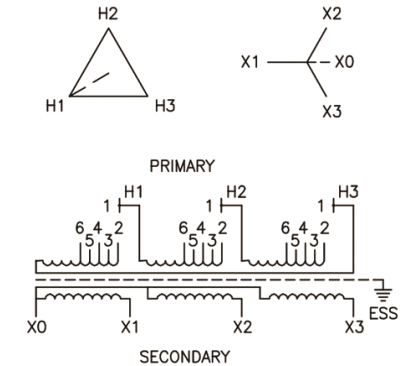
Typical Performance @ 100° C

Regulation @ 100% PF	1.6%
Regulation @ 80% PF	3.0%
Impedance	3.3%
No Load Losses (W)	180
Full Load Losses (W)	1,137

AMP Ratings

Line In (Primary) @ 208V	208 A
Load (Secondary) @ 208V	208 A

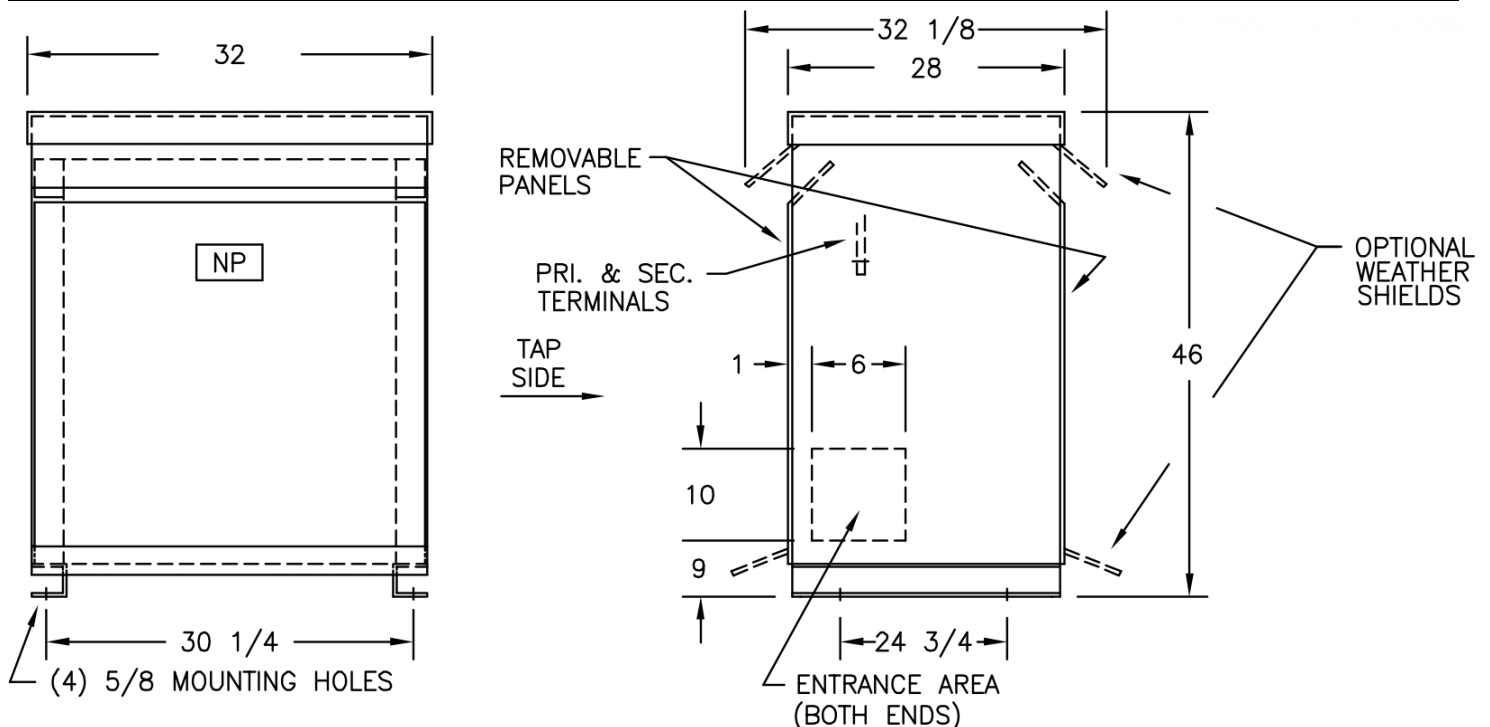
Wiring Diagram -19



VOLTS	CONNECTIONS	LINE LEADS
218	1 TO 2	H1, H2, H3
213	1 TO 3	H1, H2, H3
208	1 TO 4	H1, H2, H3
203	1 TO 5	H1, H2, H3
198	1 TO 6	H1, H2, H3
208Y/120		X0, X1, X2, X3

Notes

All units are UL listed and are designed in accordance with applicable NEMA, ANSI and IEEE standards.
Transformers are dry-type AA, ventilated NEMA 2 enclosure.
If a weathershield is indicated above this transformer can be converted to a NEMA 3R enclosure.
Transformers are floor mounted. Wall mounting bracket kit if shown above is optional and is supplied as a separate accessory.
Paint color is ANSI 61.



Outline No: 08A7673