

Typical Performance Technical Data Sheet



Catalog No. T24SF2Y-30

Characteristics

Phase	3
KVA	30
Primary	240Δ
Secondary	208Y/120
Conductor	Aluminum
Temp. Rise	115° C
Frequency	60 HZ
Taps	+2, -4 x 2.5%
ESS	Yes
Insulation	220° C
Weathershield	WS-4
Wall Bracket	WMB-3
Weight (lbs)	415
Sound (dB)	45

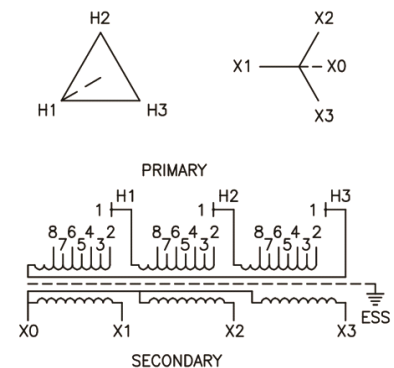
Typical Performance @ 135° C

Regulation @ 100% PF	2.7%
Regulation @ 80% PF	3.4%
Impedance	3.4%
No Load Losses (W)	85
Full Load Losses (W)	810

AMP Ratings

Line In (Primary) @ 240V	72 A
Load (Secondary) @ 208V	83 A

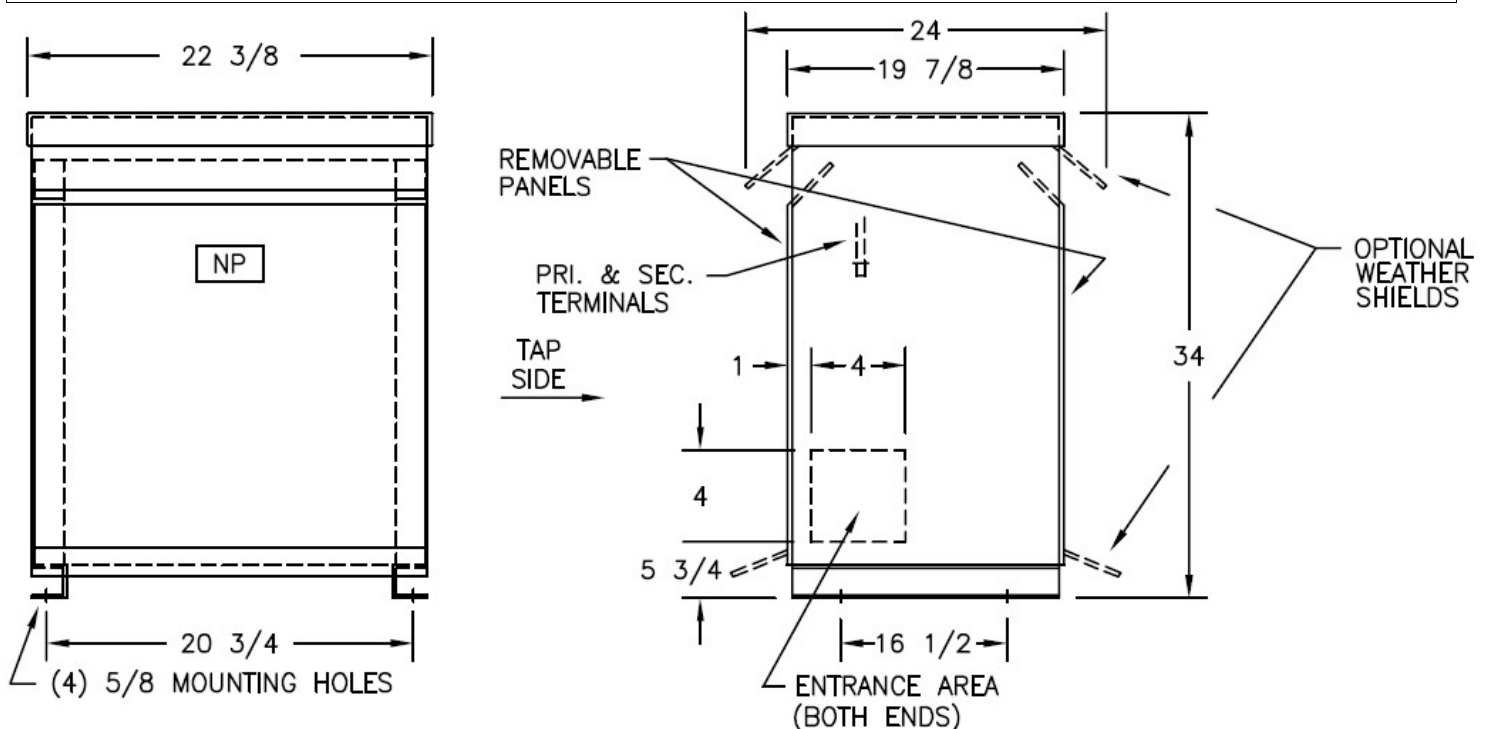
Wiring Diagram -26



VOLTS	CONNECTIONS	LINE LEADS
252	1 TO 2	H1, H2, H3
246	1 TO 3	H1, H2, H3
240	1 TO 4	H1, H2, H3
234	1 TO 5	H1, H2, H3
228	1 TO 6	H1, H2, H3
222	1 TO 7	H1, H2, H3
216	1 TO 8	H1, H2, H3
208Y/120		X0, X1, X2, X3

Notes

All units are UL listed and are designed in accordance with applicable NEMA, ANSI and IEEE standards.
Transformers are dry-type AA, ventilated NEMA 2 enclosure.
If a weathershield is indicated above this transformer can be converted to a NEMA 3R enclosure.
Transformers are floor mounted. Wall mounting bracket kit if shown above is optional and is supplied as a separate accessory.
Paint color is ANSI 61.



Outline No: 08A3222