

# Typical Performance Technical Data Sheet



Catalog No. T24SH2Y-225

## Characteristics

|               |             |
|---------------|-------------|
| Phase         | 3           |
| KVA           | 225         |
| Primary       | 240Δ        |
| Secondary     | 208Y/120    |
| Conductor     | Aluminum    |
| Temp. Rise    | 150° C      |
| Frequency     | 60 HZ       |
| Taps          | +2, -2 x 3% |
| ESS           | Yes         |
| Insulation    | 220° C      |
| Weathershield | WS-12A      |
| Wall Bracket  | NONE        |
| Weight (lbs)  | 1520        |
| Sound (dB)    | 55          |

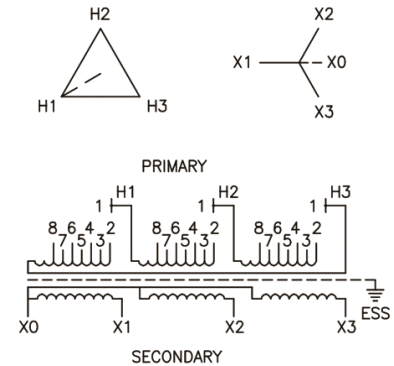
## Typical Performance @ 170° C

|                      |       |
|----------------------|-------|
| Regulation @ 100% PF | 2.3%  |
| Regulation @ 80% PF  | 4.3%  |
| Impedance            | 4.8%  |
| No Load Losses (W)   | 352   |
| Full Load Losses (W) | 4,897 |

## AMP Ratings

|                          |       |
|--------------------------|-------|
| Line In (Primary) @ 240V | 541 A |
| Load (Secondary) @ 208V  | 625 A |

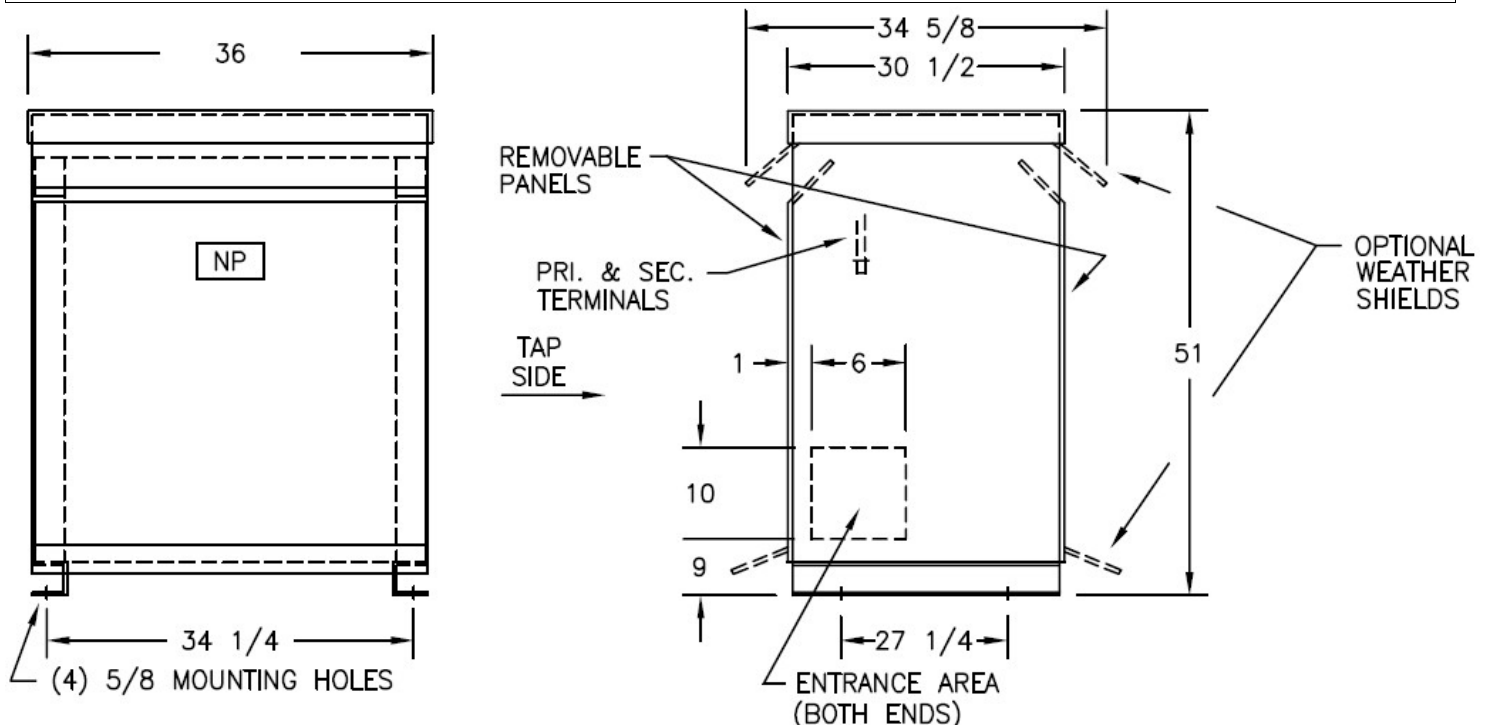
## Wiring Diagram -26B



| VOLTS    | CONNECTIONS | LINE LEADS     |
|----------|-------------|----------------|
| 254      | 2 TO 3      | H1, H2, H3     |
| 247      | 2 TO 5      | H1, H2, H3     |
| 240      | 3 TO 4      | H1, H2, H3     |
| 233      | 4 TO 5      | H1, H2, H3     |
| 226      | 5 TO 6      | H1, H2, H3     |
| 208Y/120 |             | X0, X1, X2, X3 |

## Notes

All units are UL listed and are designed in accordance with applicable NEMA, ANSI and IEEE standards.  
Transformers are dry-type AA, ventilated NEMA 2 enclosure.  
If a weathershield is indicated above this transformer can be converted to a NEMA 3R enclosure.  
Transformers are floor mounted. Wall mounting bracket kit if shown above is optional and is supplied as a separate accessory.  
Paint color is ANSI 61.



Outline No: 08A6315