

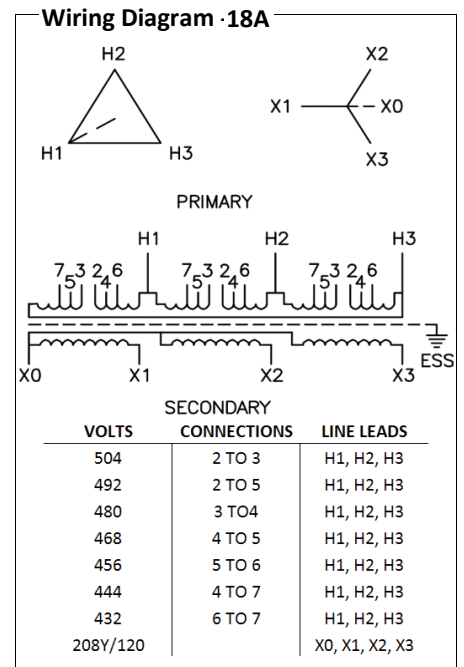
# Typical Performance Technical Data Sheet



## Catalog No T48CH2Y-150-K13

Characteristics	
Phase	3
KVA	150
Primary	480Δ
Secondary	208Y/120
Conductor	Copper
Temp. Rise	150° C
Frequency	60 HZ
Taps	+2, -4 x 2.5%
ESS	Yes
Insulation	220° C
Weathershield	WS-12A
Wall Bracket	NONE
Weight (lbs)	1750
Sound (dB)	53

Typical Performance @ 170° C	
Regulation @ 100% PF	1.4%
Regulation @ 80% PF	2.6%
Impedance	2.9%
No Load Losses (W)	335
Full Load Losses (W)	2,005

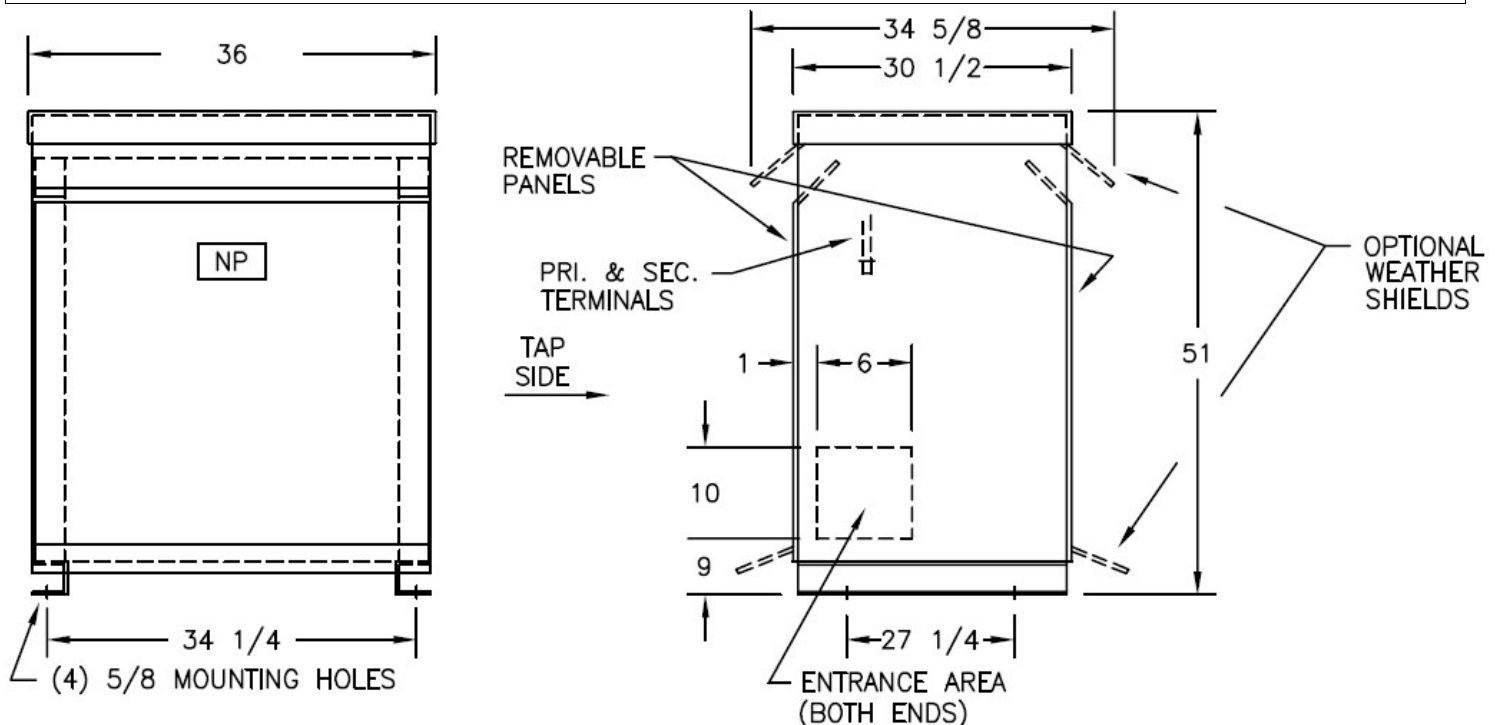


**AMP Ratings**

Line In (Primary) @ 480V	180 A
Load (Secondary) @ 208V	416 A

### Notes

All units are UL listed and are designed in accordance with applicable NEMA, ANSI and IEEE standards.  
 Transformers are dry-type AA, ventilated NEMA 2 enclosure.  
 If a weathershield is indicated above this transformer can be converted to a NEMA 3R enclosure.  
 Transformers are floor mounted. Wall mounting bracket kit if shown above is optional and is supplied as a separate accessory.  
 Paint color is ANSI 61.



Outline No: 08A6315