

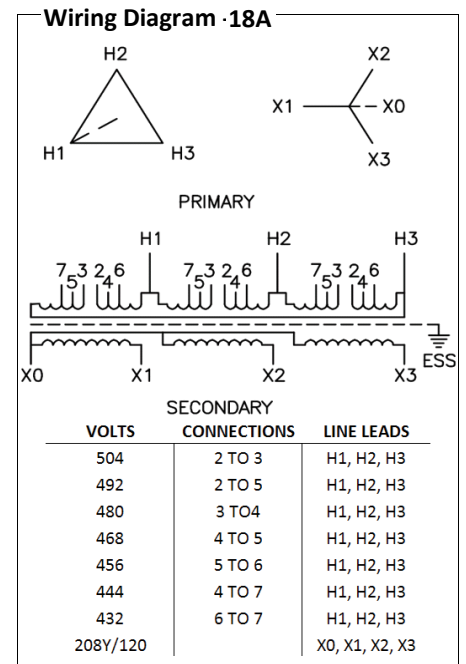
Typical Performance Technical Data Sheet



Catalog No T48CH2Y-225-K4

| Characteristics | |
|-----------------|---------------|
| Phase | 3 |
| KVA | 225 |
| Primary | 480Δ |
| Secondary | 208Y/120 |
| Conductor | Copper |
| Temp. Rise | 150° C |
| Frequency | 60 HZ |
| Taps | +2, -4 x 2.5% |
| ESS | Yes |
| Insulation | 220° C |
| Weathershield | WS-12A |
| Wall Bracket | NONE |
| Weight (lbs) | 1750 |
| Sound (dB) | 55 |

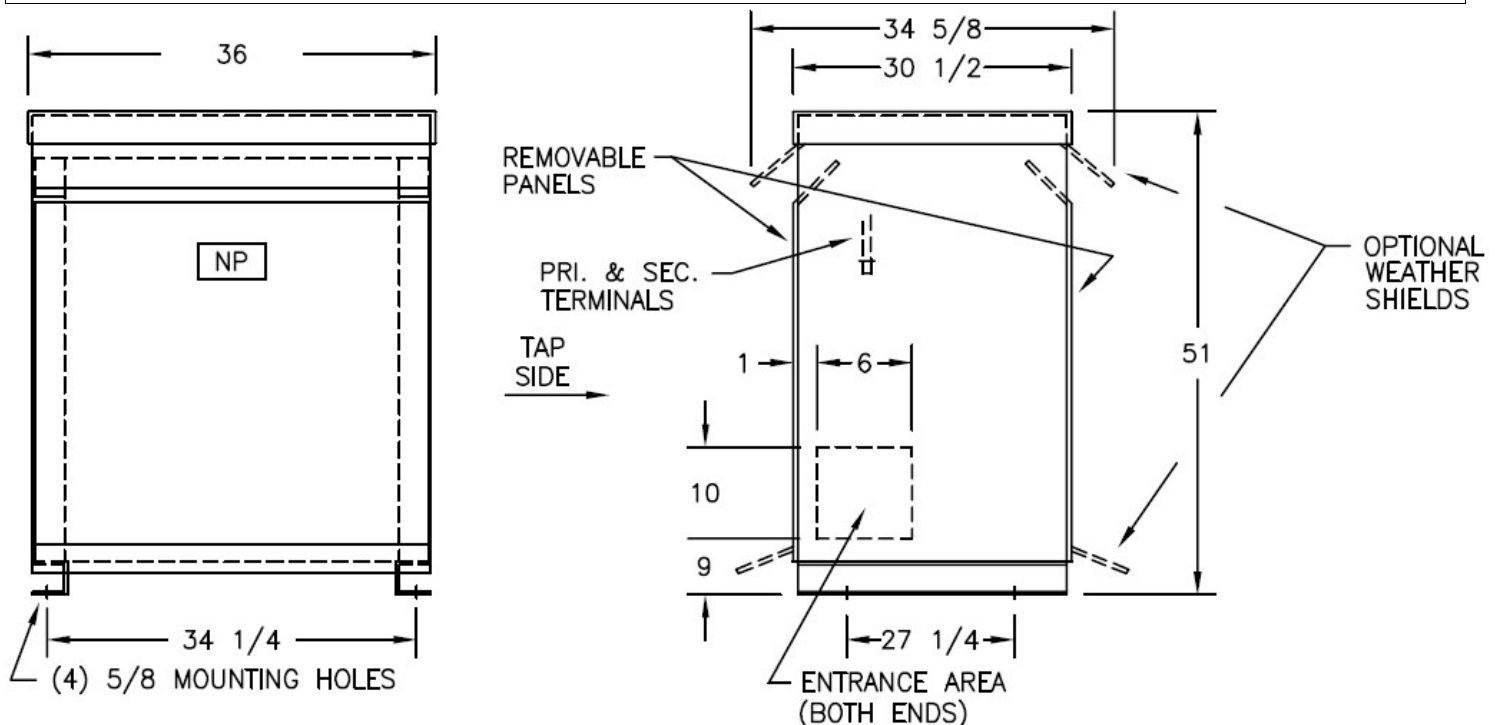
| Typical Performance @ 170° C | |
|------------------------------|-------|
| Regulation @ 100% PF | 2.1% |
| Regulation @ 80% PF | 3.9% |
| Impedance | 4.3% |
| No Load Losses (W) | 335 |
| Full Load Losses (W) | 4,511 |



| AMP Ratings | |
|--------------------------|-------|
| Line In (Primary) @ 480V | 271 A |
| Load (Secondary) @ 208V | 625 A |

Notes

All units are UL listed and are designed in accordance with applicable NEMA, ANSI and IEEE standards.
 Transformers are dry-type AA, ventilated NEMA 2 enclosure.
 If a weathershield is indicated above this transformer can be converted to a NEMA 3R enclosure.
 Transformers are floor mounted. Wall mounting bracket kit if shown above is optional and is supplied as a separate accessory.
 Paint color is ANSI 61.



Outline No: 08A6315

Meets 10 CFR 431(DOE 2016) Efficiency
 Dry Type Transformer General Purpose

© 2017 Electro-Mechanical Corporation

For reference only
 Subject to change without notice