

Typical Performance Technical Data Sheet



Catalog No. T48LF42-15

Characteristics

Phase	3
KVA	15
Primary	480Δ
Secondary	480Y/277
Conductor	Aluminum
Temp. Rise	115° C
Frequency	60 HZ
Taps	+2, -4 x 2.5%
ESS	No
Insulation	220° C
Weathershield	WS-2
Wall Bracket	WMB-3
Weight (lbs)	245
Sound (dB)	45

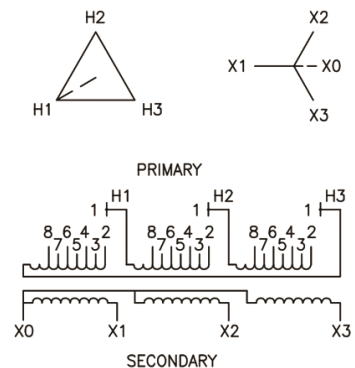
Typical Performance @ 135° C

Regulation @ 100% PF	3.6%
Regulation @ 80% PF	3.9%
Impedance	4.0%
No Load Losses (W)	49
Full Load Losses (W)	534

AMP Ratings

Line In (Primary) @ 480V	18 A
Load (Secondary) @ 480V	18 A

Wiring Diagram -20



VOLTS	CONNECTIONS	LINE LEADS
504	1 TO 2	H1, H2, H3
492	1 TO 3	H1, H2, H3
480	1 TO 4	H1, H2, H3
468	1 TO 5	H1, H2, H3
456	1 TO 6	H1, H2, H3
444	1 TO 7	H1, H2, H3
432	1 TO 8	H1, H2, H3
480Y/277		X0, X1, X2, X3

Notes

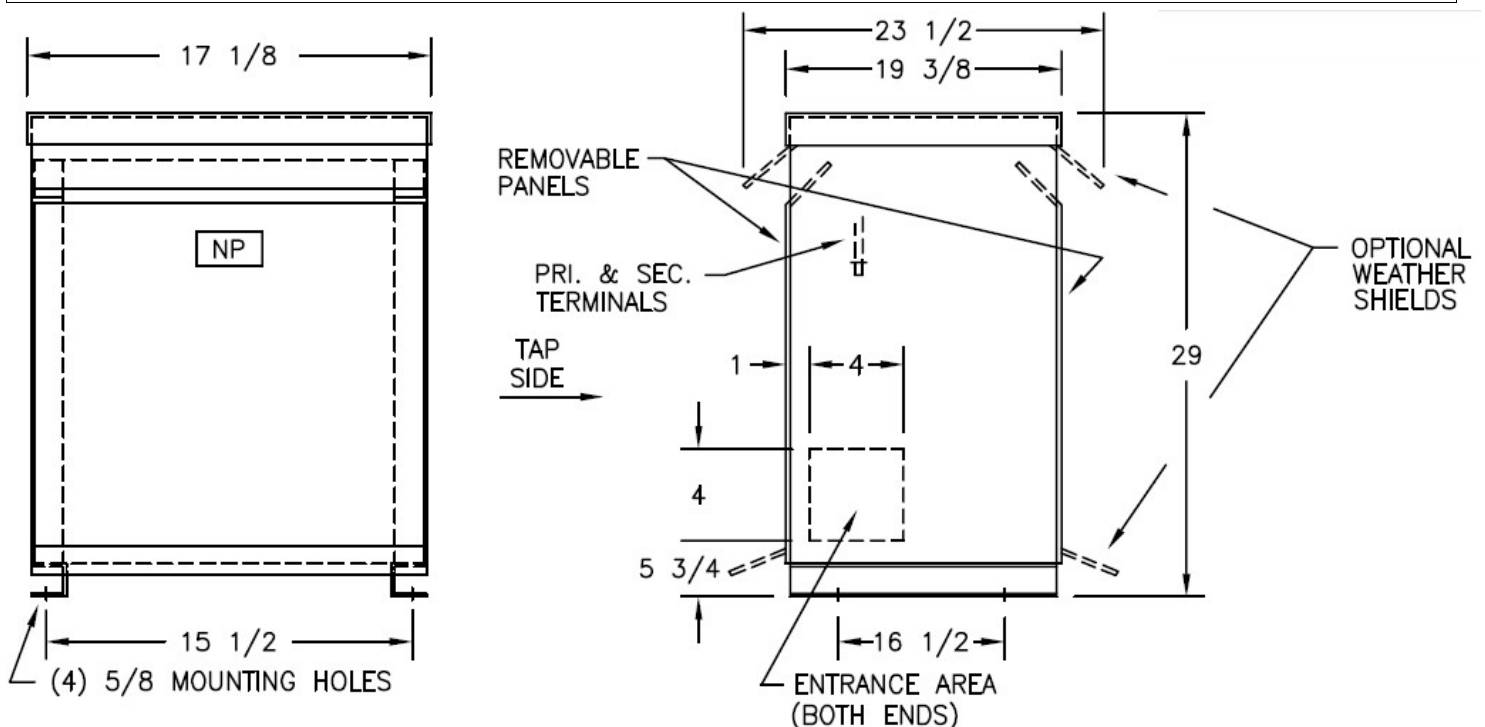
All units are UL listed and are designed in accordance with applicable NEMA, ANSI and IEEE standards.

Transformers are dry-type AA, ventilated NEMA 2 enclosure.

If a weathershield is indicated above this transformer can be converted to a NEMA 3R enclosure.

Transformers are floor mounted. Wall mounting bracket kit if shown above is optional and is supplied as a separate accessory.

Paint color is ANSI 61.



Outline No: 08A3221

Meets 10 CFR 431(DOE 2016) Efficiency
Dry Type Transformer General Purpose

© 2017 Electro-Mechanical Corporation

For reference only
Subject to change without notice