

Typical Performance Technical Data Sheet



Catalog No. T48LH2D-225

Characteristics

| | |
|---------------|---------------|
| Phase | 3 |
| KVA | 225 |
| Primary | 480Δ |
| Secondary | 240Δ/120LT |
| Conductor | Aluminum |
| Temp. Rise | 150° C |
| Frequency | 60 HZ |
| Taps | +2, -4 x 2.5% |
| ESS | No |
| Insulation | 220° C |
| Weathershield | WS-12A |
| Wall Bracket | NONE |
| Weight (lbs) | 1520 |
| Sound (dB) | 55 |

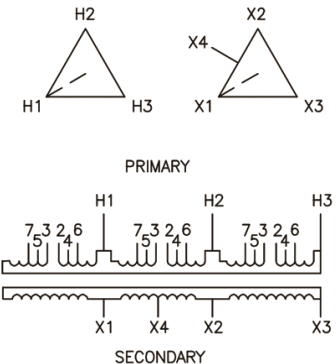
Typical Performance @ 170° C

| | |
|----------------------|-------|
| Regulation @ 100% PF | 1.9% |
| Regulation @ 80% PF | 3.7% |
| Impedance | 4.1% |
| No Load Losses (W) | 359 |
| Full Load Losses (W) | 4,222 |

AMP Ratings

| | |
|--------------------------|-------|
| Line In (Primary) @ 480V | 271 A |
| Load (Secondary) @ 240V | 541 A |

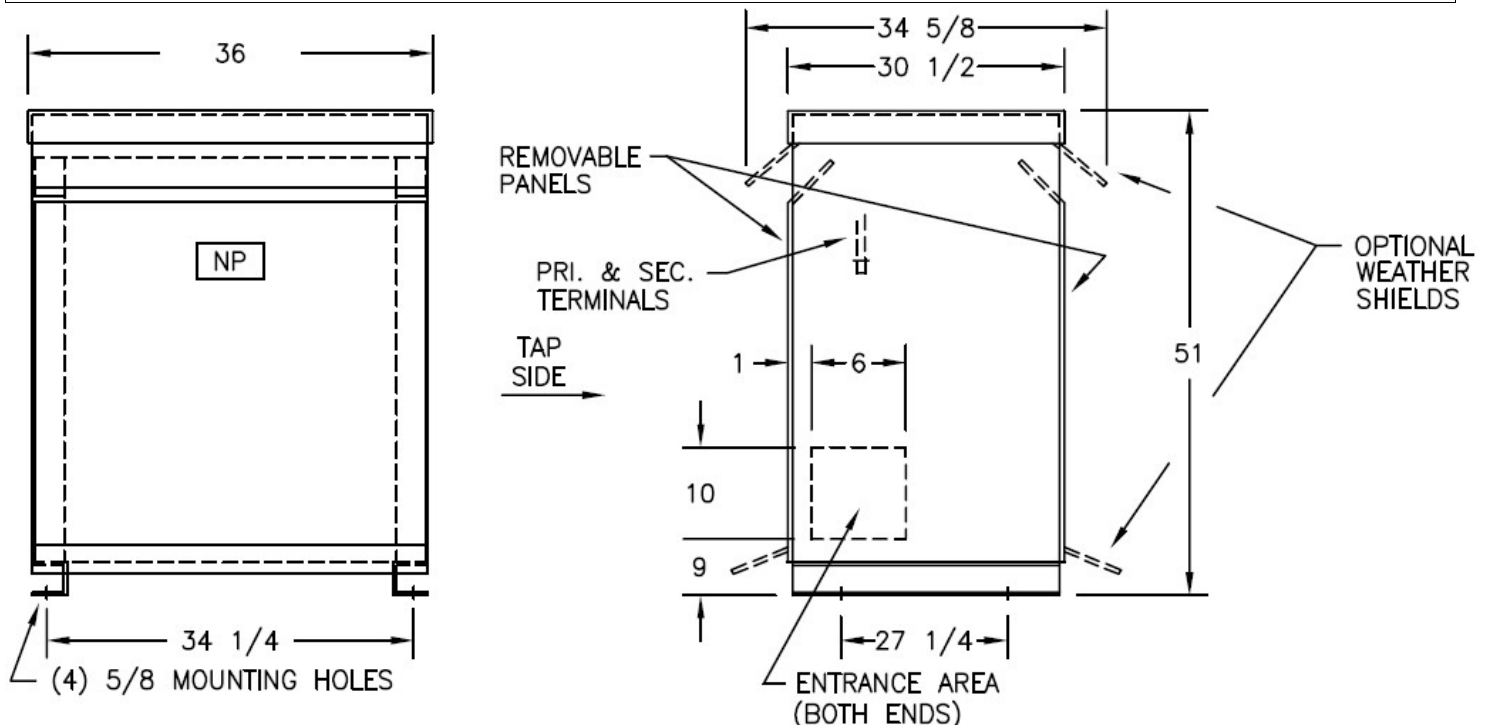
Wiring Diagram -21A



| VOLTS | CONNECTIONS | LINE LEADS |
|-------|-------------|------------|
| 504 | 1 TO 2 | H1, H2, H3 |
| 492 | 1 TO 3 | H1, H2, H3 |
| 480 | T TO 4 | H1, H2, H3 |
| 468 | 1 TO 5 | H1, H2, H3 |
| 456 | 1 TO 6 | H1, H2, H3 |
| 444 | 1 TO 7 | H1, H2, H3 |
| 432 | 1 TO 8 | H1, H2, H3 |
| 240 | | X1, X2, X3 |

Notes

All units are UL listed and are designed in accordance with applicable NEMA, ANSI and IEEE standards.
Transformers are dry-type AA, ventilated NEMA 2 enclosure.
If a weathershield is indicated above this transformer can be converted to a NEMA 3R enclosure.
Transformers are floor mounted. Wall mounting bracket kit if shown above is optional and is supplied as a separate accessory.
Paint color is ANSI 61.



Outline No: 08A6315