

# Typical Performance Technical Data Sheet



Catalog No. T48LH3Y-225

## Characteristics

Phase	3
KVA	225
Primary	480Δ
Secondary	380Y/219
Conductor	Aluminum
Temp. Rise	150° C
Frequency	60 HZ
Taps	+2, -4 x 2.5%
ESS	No
Insulation	220° C
Weathershield	WS-12A
Wall Bracket	NONE
Weight (lbs)	1520
Sound (dB)	55

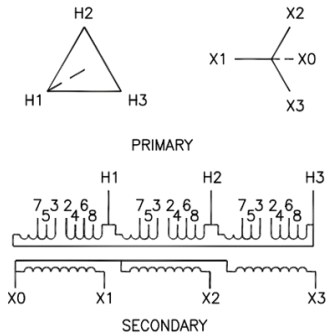
## Typical Performance @ 170° C

Regulation @ 100% PF	2.0%
Regulation @ 80% PF	3.9%
Impedance	4.4%
No Load Losses (W)	318
Full Load Losses (W)	4,395

## AMP Ratings

Line In (Primary) @ 480V	271 A
Load (Secondary) @ 380V	342 A

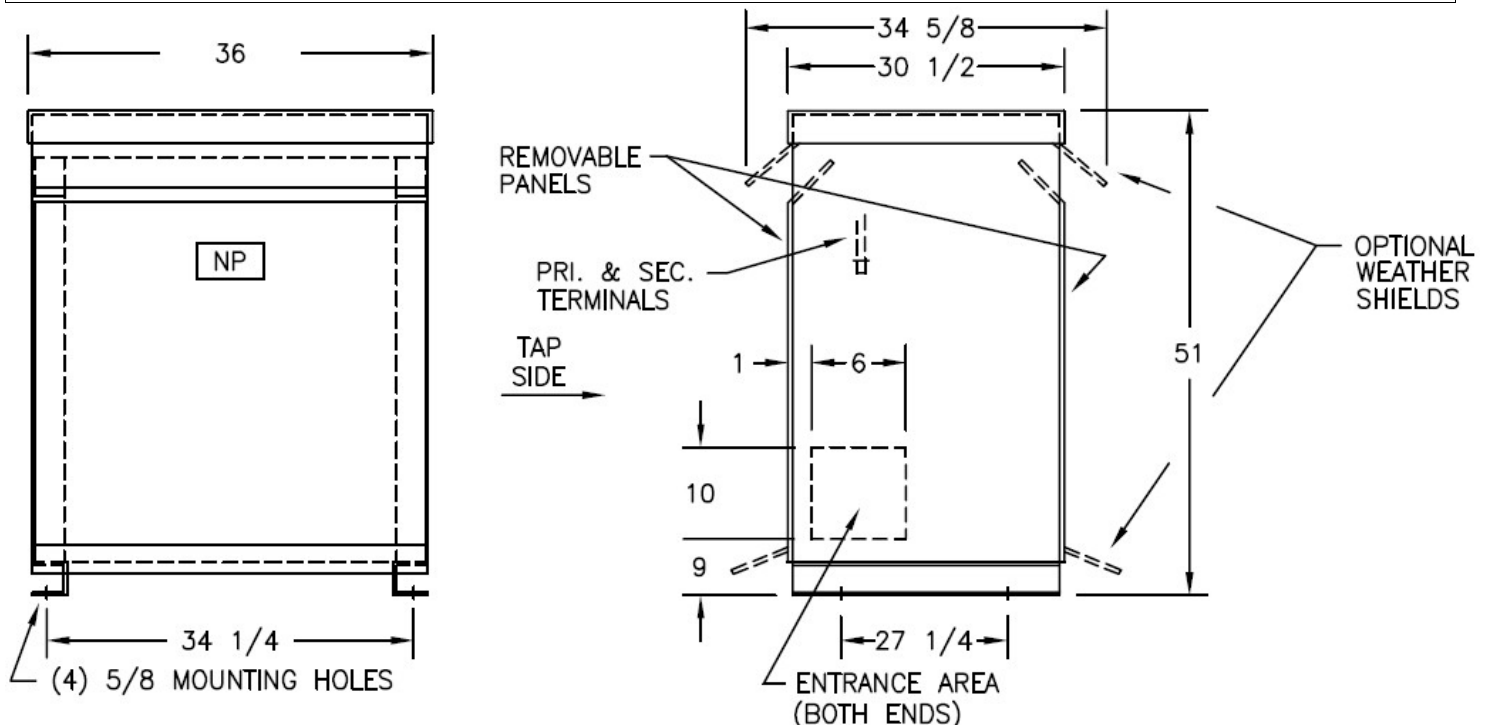
## Wiring Diagram -30B



VOLTS	CONNECTIONS	LINE LEADS
504	2 TO 3	H1, H2, H3
492	2 TO 5	H1, H2, H3
480	3 TO 4	H1, H2, H3
468	4 TO 5	H1, H2, H3
456	5 TO 6	H1, H2, H3
444	4 TO 7	H1, H2, H3
432	6 TO 7	H1, H2, H3
380Y/219		X0, X1, X2, X3

## Notes

All units are UL listed and are designed in accordance with applicable NEMA, ANSI and IEEE standards.  
Transformers are dry-type AA, ventilated NEMA 2 enclosure.  
If a weathershield is indicated above this transformer can be converted to a NEMA 3R enclosure.  
Transformers are floor mounted. Wall mounting bracket kit if shown above is optional and is supplied as a separate accessory.  
Paint color is ANSI 61.



Outline No: 08A6315