

Typical Performance Technical Data Sheet

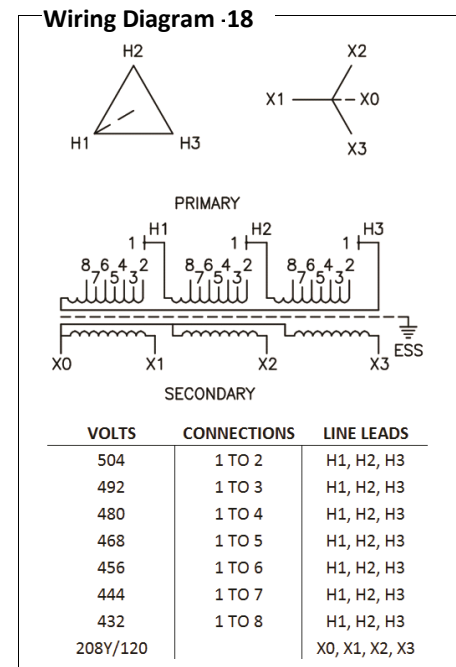


Catalog No. T48SF2Y-15-K4

| Characteristics | |
|-----------------|---------------|
| Phase | 3 |
| KVA | 15 |
| Primary | 480Δ |
| Secondary | 208Y/120 |
| Conductor | Aluminum |
| Temp. Rise | 115° C |
| Frequency | 60 HZ |
| Taps | +2, -4 x 2.5% |
| ESS | Yes |
| Insulation | 220° C |
| Weathershield | WS-2 |
| Wall Bracket | WMB-3 |
| Weight (lbs) | 245 |
| Sound (dB) | 45 |

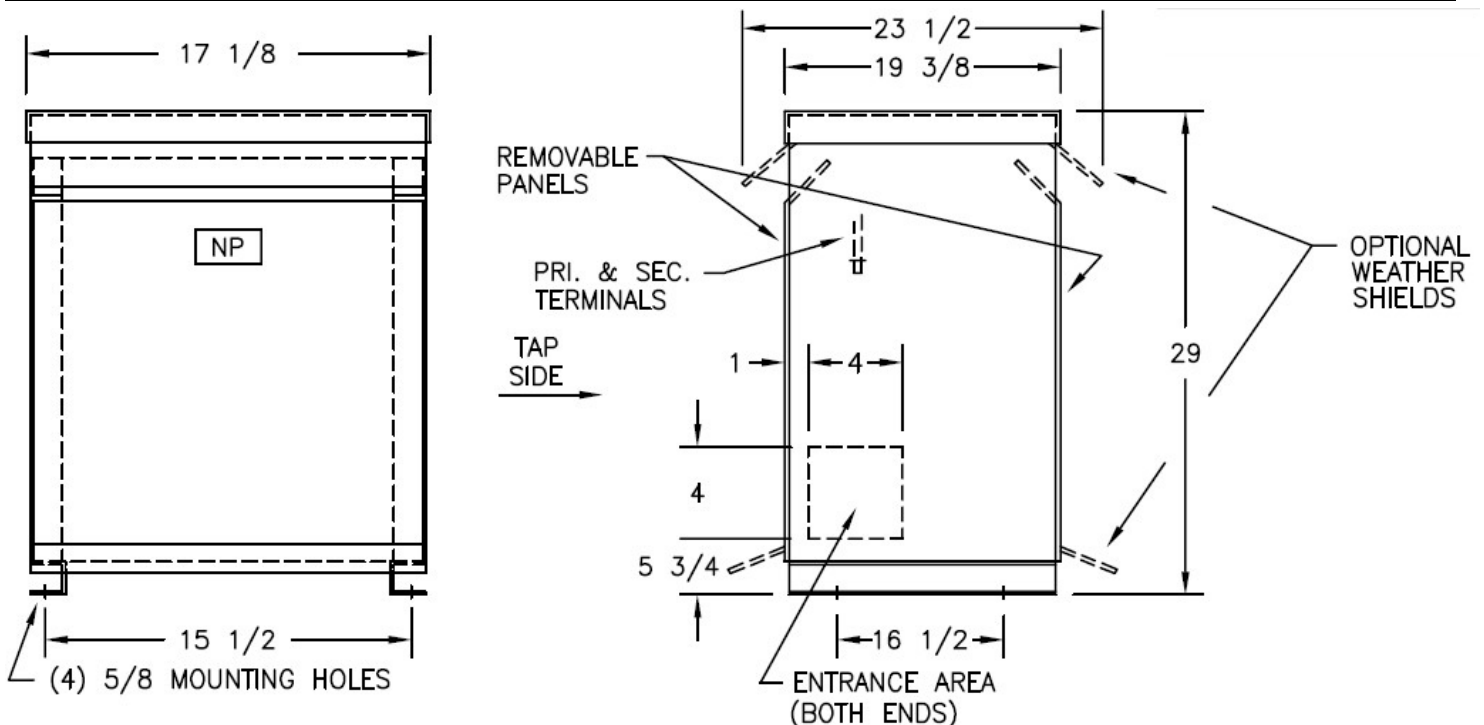
| Typical Performance @ 135° C | |
|------------------------------|------|
| Regulation @ 100% PF | 3.6% |
| Regulation @ 80% PF | 3.9% |
| Impedance | 4.0% |
| No Load Losses (W) | 49 |
| Full Load Losses (W) | 534 |

| AMP Ratings | |
|--------------------------|------|
| Line In (Primary) @ 480V | 18 A |
| Load (Secondary) @ 208V | 42 A |



Notes

All units are UL listed and are designed in accordance with applicable NEMA, ANSI and IEEE standards. Transformers are dry-type AA, ventilated NEMA 2 enclosure. If a weathershield is indicated above this transformer can be converted to a NEMA 3R enclosure. Transformers are floor mounted. Wall mounting bracket kit if shown above is optional and is supplied as a separate accessory. Paint color is ANSI 61.



Outline No: 08A3221