

# Typical Performance Technical Data Sheet



## Catalog No T48SH2Y-112-K13

### Characteristics

Phase	3
KVA	112
Primary	480Δ
Secondary	208Y/120
Conductor	Aluminum
Temp. Rise	150° C
Frequency	60 HZ
Taps	+2, -4 x 2.5%
ESS	Yes
Insulation	220° C
Weathershield	WS-10B
Wall Bracket	NONE
Weight (lbs)	1205
Sound (dB)	53

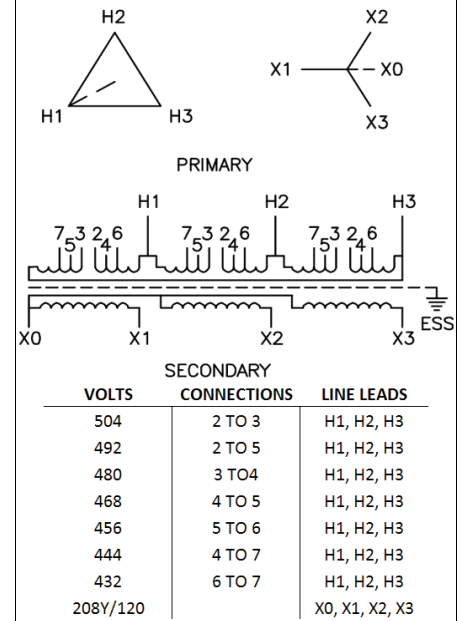
### Typical Performance @ 170° C

Regulation @ 100% PF	1.7%
Regulation @ 80% PF	2.8%
Impedance	2.9%
No Load Losses (W)	265
Full Load Losses (W)	1,894

### AMP Ratings

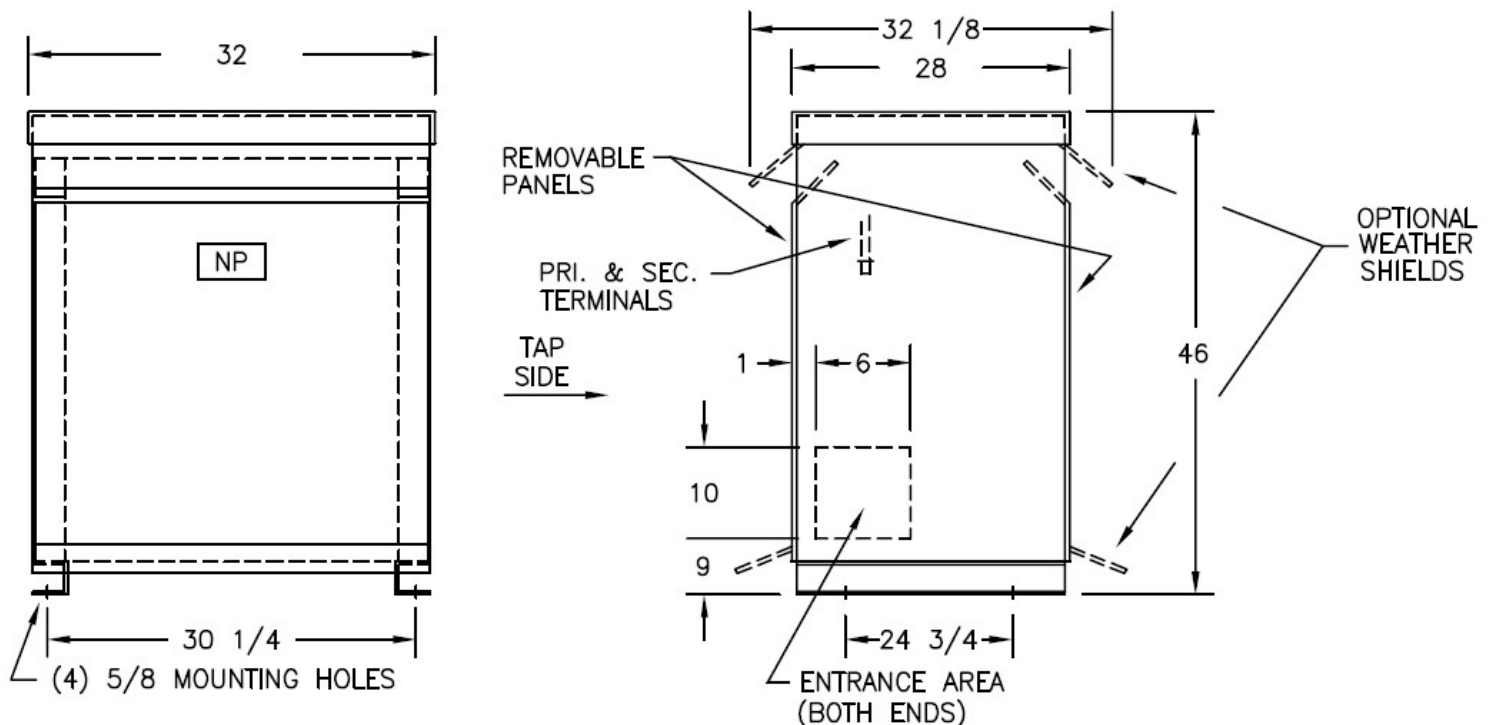
Line In (Primary) @ 480V	135 A
Load (Secondary) @ 208V	311 A

### Wiring Diagram -18A



### Notes

All units are UL listed and are designed in accordance with applicable NEMA, ANSI and IEEE standards.  
Transformers are dry-type AA, ventilated NEMA 2 enclosure.  
If a weathershield is indicated above this transformer can be converted to a NEMA 3R enclosure.  
Transformers are floor mounted. Wall mounting bracket kit if shown above is optional and is supplied as a separate accessory.  
Paint color is ANSI 61.



Outline No: 08A6251