

Typical Performance Technical Data Sheet



Catalog No. T60SB2Y-45

Characteristics

Phase	3
KVA	45
Primary	600Δ
Secondary	208Y/120
Conductor	Aluminum
Temp. Rise	80° C
Frequency	60 HZ
Taps	+2, -4 x 2.5%
ESS	Yes
Insulation	220° C
Weathershield	WS-18
Wall Bracket	WMB-4
Weight (lbs)	685
Sound (dB)	45

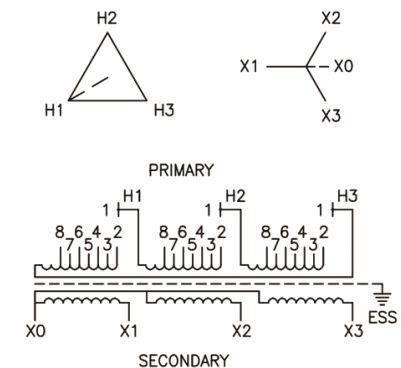
Typical Performance @ 100° C

Regulation @ 100% PF	1.5%
Regulation @ 80% PF	2.6%
Impedance	2.8%
No Load Losses (W)	143
Full Load Losses (W)	656

AMP Ratings

Line In (Primary) @ 600V	43 A
Load (Secondary) @ 208V	125 A

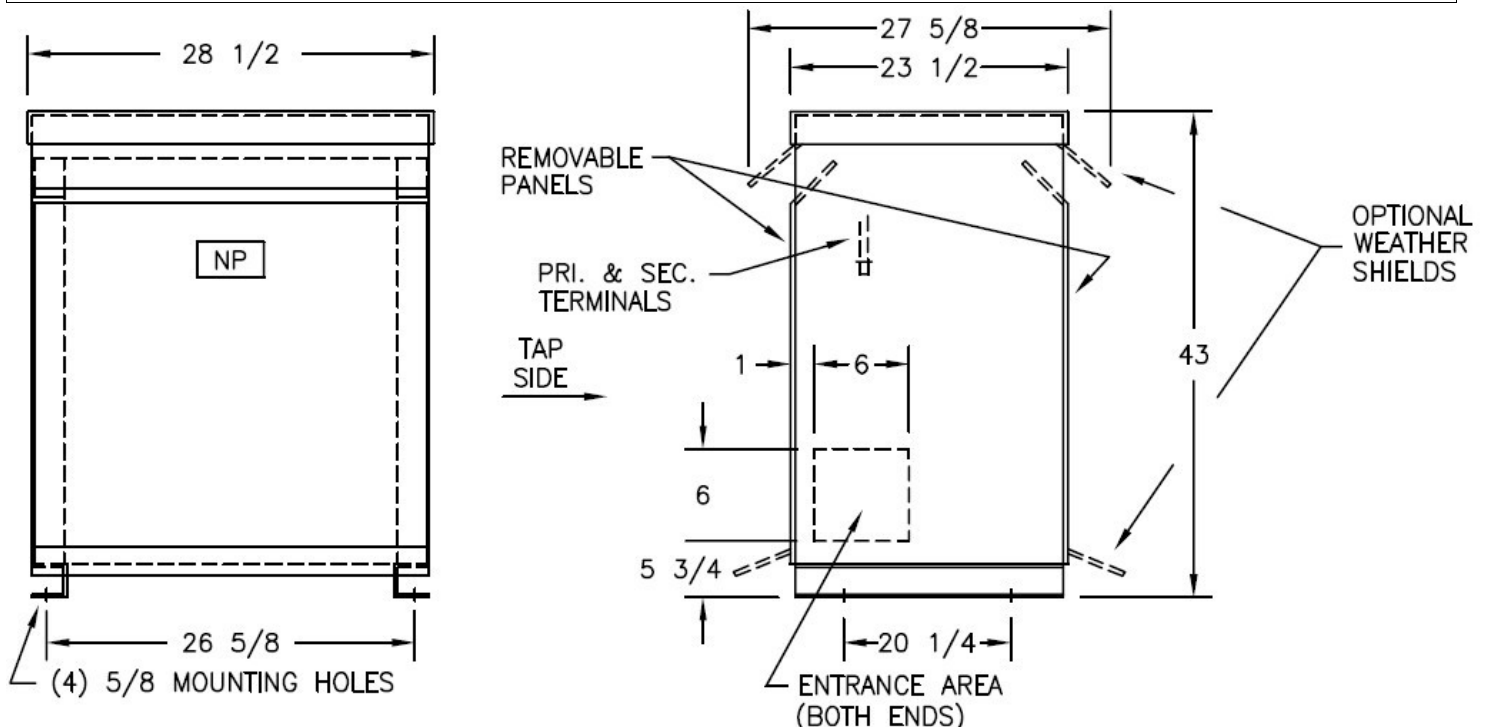
Wiring Diagram -24



VOLTS	CONNECTIONS	LINE LEADS
630	1 TO 2	H1, H2, H3
615	1 TO 3	H1, H2, H3
600	1 TO 4	H1, H2, H3
585	1 TO 5	H1, H2, H3
570	1 TO 6	H1, H2, H3
555	1 TO 7	H1, H2, H3
540	1 TO 8	H1, H2, H3
208Y/120		X0, X1, X2, X3

Notes

All units are UL listed and are designed in accordance with applicable NEMA, ANSI and IEEE standards.
Transformers are dry-type AA, ventilated NEMA 2 enclosure.
If a weathershield is indicated above this transformer can be converted to a NEMA 3R enclosure.
Transformers are floor mounted. Wall mounting bracket kit if shown above is optional and is supplied as a separate accessory.
Paint color is ANSI 61.



Outline No: 08A3224