

# Typical Performance Technical Data Sheet



Catalog No. T60SF2Y-112

## Characteristics

Phase	3
KVA	112
Primary	600Δ
Secondary	208Y/120
Conductor	Aluminum
Temp. Rise	115° C
Frequency	60 HZ
Taps	+2, -4 x 2.5%
ESS	Yes
Insulation	220° C
Weathershield	WS-10B
Wall Bracket	NONE
Weight (lbs)	1205
Sound (dB)	50

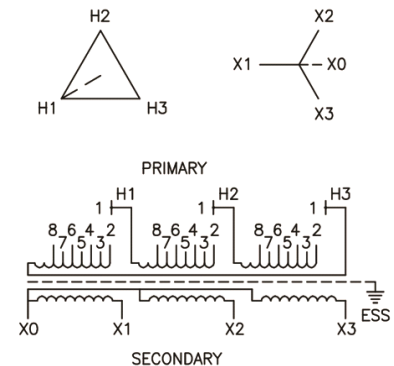
## Typical Performance @ 135° C

Regulation @ 100% PF	1.6%
Regulation @ 80% PF	2.7%
Impedance	2.8%
No Load Losses (W)	265
Full Load Losses (W)	1,726

## AMP Ratings

Line In (Primary) @ 600V	108 A
Load (Secondary) @ 208V	311 A

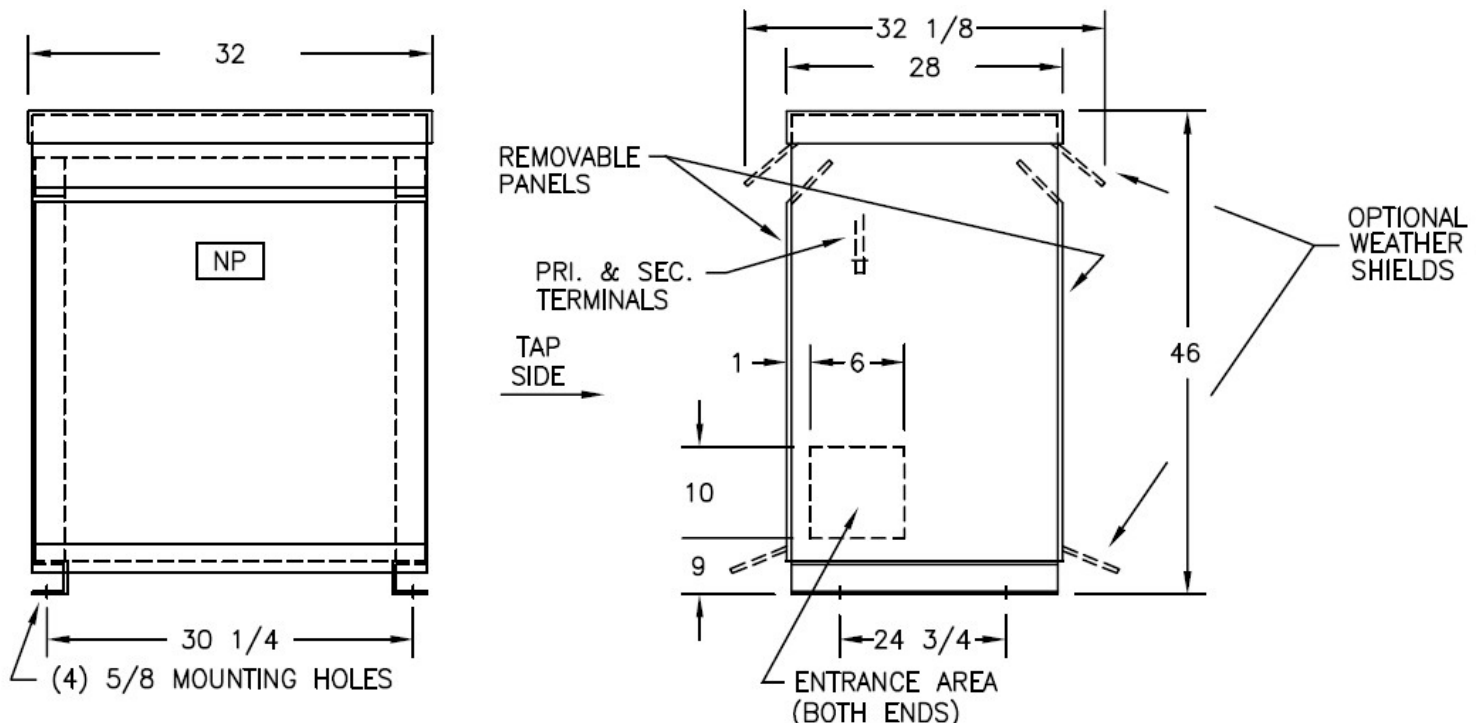
## Wiring Diagram -24A



VOLTS	CONNECTIONS	LINE LEADS
630	2 TO 3	H1, H2, H3
615	2 TO 5	H1, H2, H3
600	3 TO 4	H1, H2, H3
585	4 TO 5	H1, H2, H3
570	5 TO 6	H1, H2, H3
555	4 TO 7	H1, H2, H3
540	6 TO 7	H1, H2, H3
208Y/120		X0, X1, X2, X3

## Notes

All units are UL listed and are designed in accordance with applicable NEMA, ANSI and IEEE standards.  
Transformers are dry-type AA, ventilated NEMA 2 enclosure.  
If a weathershield is indicated above this transformer can be converted to a NEMA 3R enclosure.  
Transformers are floor mounted. Wall mounting bracket kit if shown above is optional and is supplied as a separate accessory.  
Paint color is ANSI 61.



Outline No: 08A6251