

Typical Performance Technical Data Sheet



Catalog No. T60SF2Y-75

Characteristics

| | |
|---------------|---------------|
| Phase | 3 |
| KVA | 75 |
| Primary | 600Δ |
| Secondary | 208Y/120 |
| Conductor | Aluminum |
| Temp. Rise | 115° C |
| Frequency | 60 HZ |
| Taps | +2, -4 x 2.5% |
| ESS | Yes |
| Insulation | 220° C |
| Weathershield | WS-10B |
| Wall Bracket | NONE |
| Weight (lbs) | 1045 |
| Sound (dB) | 50 |

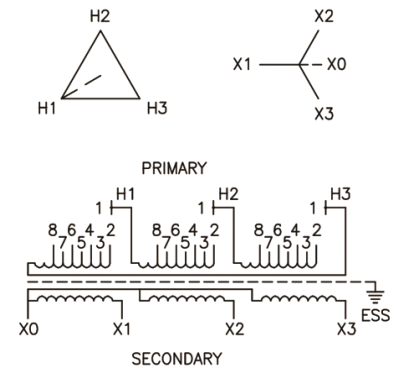
Typical Performance @ 135° C

| | |
|----------------------|-------|
| Regulation @ 100% PF | 1.4% |
| Regulation @ 80% PF | 2.5% |
| Impedance | 2.7% |
| No Load Losses (W) | 200 |
| Full Load Losses (W) | 1,067 |

AMP Ratings

| | |
|--------------------------|-------|
| Line In (Primary) @ 600V | 72 A |
| Load (Secondary) @ 208V | 208 A |

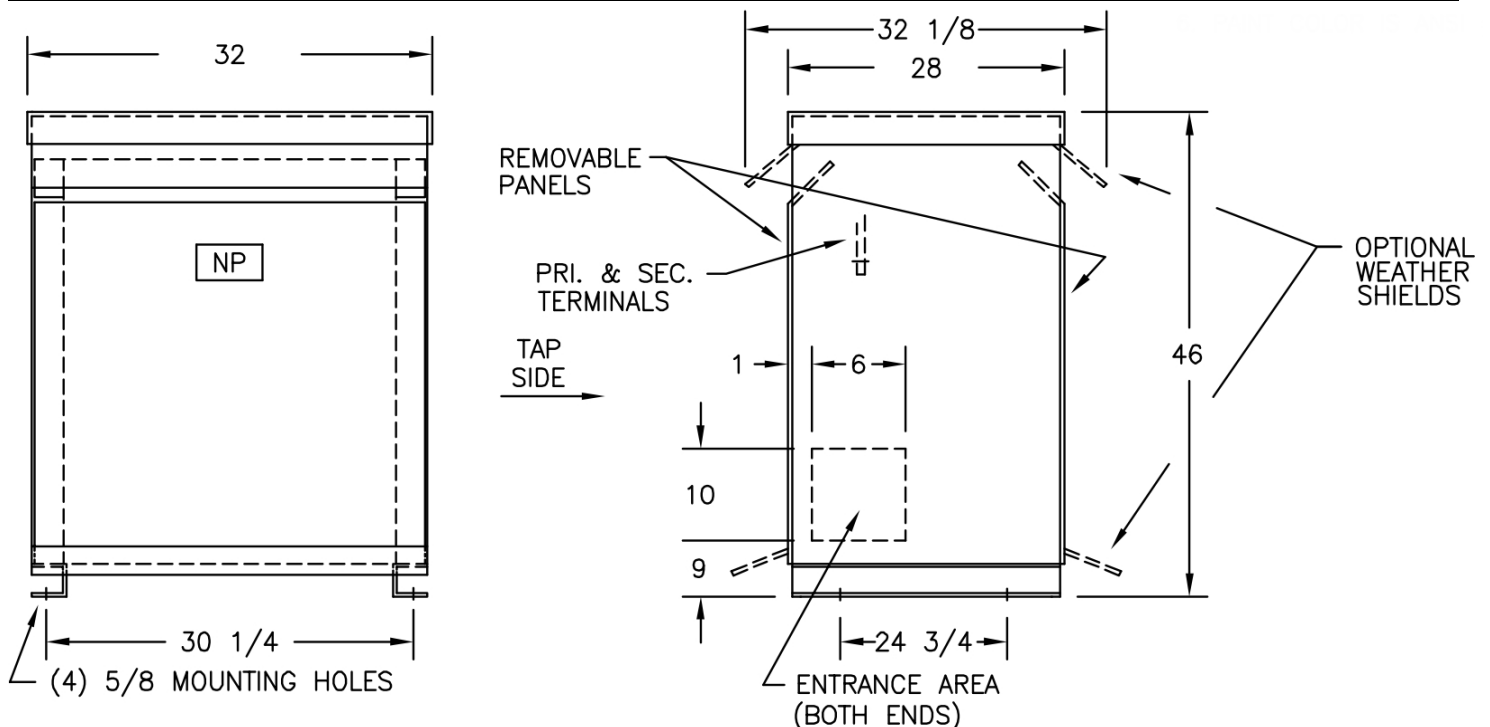
Wiring Diagram -24



| VOLTS | CONNECTIONS | LINE LEADS |
|----------|-------------|----------------|
| 630 | 1 TO 2 | H1, H2, H3 |
| 615 | 1 TO 3 | H1, H2, H3 |
| 600 | 1 TO 4 | H1, H2, H3 |
| 585 | 1 TO 5 | H1, H2, H3 |
| 570 | 1 TO 6 | H1, H2, H3 |
| 555 | 1 TO 7 | H1, H2, H3 |
| 540 | 1 TO 8 | H1, H2, H3 |
| 208Y/120 | | X0, X1, X2, X3 |

Notes

All units are UL listed and are designed in accordance with applicable NEMA, ANSI and IEEE standards.
Transformers are dry-type AA, ventilated NEMA 2 enclosure.
If a weathershield is indicated above this transformer can be converted to a NEMA 3R enclosure.
Transformers are floor mounted. Wall mounting bracket kit if shown above is optional and is supplied as a separate accessory.
Paint color is ANSI 61.



Outline No: 08A7673